



2019 Workshop - Song List & Suggested Listening

We've divided up the songs *very approximately* to give you a basic idea as to what to look at. We are talking about "less advanced and more advanced" mostly from a melodic and harmonic perspective, not so much from a rhythm section "groove" or rhythmic perspective.

If you are a beginner/intermediate player, focus on the Less Advanced songs first, then branch out from there. More advanced players will look at ALL the music, so be sure to look at the easier songs too.

An online search will give you *hundreds* of versions of the MSJ songs listed here. The recordings below are a good starting point.

LESS ADVANCED

Bernie's Tune

- Sonny Stitt & His West Coast Friends: https://youtu.be/_SOlf1lxZJo
- Paul Desmond: <https://youtu.be/BvCvCv0OWIs>
- Gerry Mulligan: <https://youtu.be/W985hWD5KYg>

The Blues Walk

- Clifford Brown and Max Roach: <https://www.youtube.com/watch?v=c4f2vWssLaU>
- Dexter Gordon: <https://www.youtube.com/watch?v=mvh8Zjhd7u4>

Crazy Rhythm

- Stan Getz and JJ Johnson: https://www.youtube.com/watch?v=gzn_HaFwGIM
- Roger Wolfe Kahn: <https://www.youtube.com/watch?v=LQWmB2PrS0A> (original 1928)
- Benny Carter: <https://www.youtube.com/watch?v=TsxlM9iqkXs>
- Gregory and Maurice Hines: <https://www.youtube.com/watch?v=kvZu-cHEEXM> full tune starts at 1:09

Flight To Jordan

- Duke Jordan: https://www.youtube.com/watch?v=-YQ_w7s-QDk
- Tito Puente: https://www.youtube.com/watch?v=8vQrKpjB_I
- Chucho Valdez: <https://youtu.be/hU31wu7xUWk>

The Nearness of You

- Ella Fitzgerald: <https://www.youtube.com/watch?v=2s7GqwWK6Rc>
- Sarah Vaughan: <https://youtu.be/V9aaJBAgfT0>
- Lou Donaldson: <https://youtu.be/DLy40-L5eiw>

On Broadway

- George Benson: https://www.youtube.com/watch?v=ok__l1Acuwg
- The Drifters: <https://www.youtube.com/watch?v=YJFYpVllyqo>

Song For My Father

- Horace Silver Quintet (Live): <https://www.youtube.com/watch?v=NFjmWI-d6d4>
- Horace Silver: <https://www.youtube.com/watch?v=CWeXOm49kE0>

Yesterdays

- Jeff Hamilton Trio: <https://www.youtube.com/watch?v=a3MgfPS30IA>
- Wes Montgomery: <https://www.youtube.com/watch?v=3WGkGVqAFKk>
- Ella Fitzgerald: <https://www.youtube.com/watch?v=0d9NHPSUDQA>
- Art Blakey and the Jazz Messengers: <https://www.youtube.com/watch?v=1mUxHrTzdgQ>

MORE ADVANCED

Central Park West

- John Coltrane Quartet: https://www.youtube.com/watch?v=o_s_4nC_NVw
- Joe Lovano: <https://youtu.be/BCodWzGXVXk>
- Tommy Flanagan: <https://youtu.be/hVlslpd5h0>

Chega De Saudade

- Eliane Elias: <https://www.youtube.com/watch?v=PM8ojOx3f4s>
- Antonio Carlos Jobim: <https://www.youtube.com/watch?v=-c6Zbi3tbMg>
- Stan Getz (Live): <https://youtu.be/pm8ZLJGID9g>
- João Gilberto: <https://www.youtube.com/watch?v=yUuJrpP0Mak>

Freedom Jazz Dance

- Jay Leonart/Wayne Escoffrey: <https://www.youtube.com/watch?v=cl1d45kHT2Y>
- Hank Jones/Tony Williams/Ron Carter: <https://www.youtube.com/watch?v=G74A1cRZKW8>
- Eddie Harris: <https://www.youtube.com/watch?v=kf7FB4ilX5w>
- Miles Davis: <https://www.youtube.com/watch?v=yJ11cArknek>

Full House

- Pat Martino: <https://www.youtube.com/watch?v=lzW8jzICbm8>
- Wes Montgomery Quartet (Live): <https://www.youtube.com/watch?v=Ji1EVosAMsA>
- Wes Montgomery: <https://www.youtube.com/watch?v=AFkQ0By8N1g>

Isotope

- Joe Henderson: <https://www.youtube.com/watch?v=Bfw2sgGj02g>
- Seamus Blake: <https://youtu.be/zeZKr95jLT0>

Night and Day

- Oscar Peterson Trio: <https://www.youtube.com/watch?v=GoDsOw2-LCc>
- Adam Rogers: <https://www.youtube.com/watch?v=oLDhZhl3Oj4>
- Joe Henderson: <https://youtu.be/8hFsKbEh4OI>
- Stan Getz and Kenny Barron: <https://youtu.be/wjQaLkUuDj4>

Parisian Thoroughfare

- Clifford Brown & Max Roach: <https://www.youtube.com/watch?v=vJ7tDo-TOOw>
- Jerry Gonzalez and the Fort Apache Band: <https://www.youtube.com/watch?v=-WJV-HeXCW0>
- Bud Powell: https://www.youtube.com/watch?v=sUr_-bf-p0Q
- Donald Byrd: <https://youtu.be/8gdOJX-ETxc>

Speak No Evil

- Wayne Shorter: <https://www.youtube.com/watch?v=fvRkGgILe-U>

BERNIE'S TUNE

(MEDIUM SWING)

Dm⁷ **Bb7(b9)**

Eø7 **A7(b9)** **Dm** **Eø7** **A7(b9)**

Dm⁷ **Bb7(b9)**

Eø7 **A7(b9)** **Dm**

Bbmaj7 **Gm7** **Cm7** **F7** **Bbmaj7** **Gm7** **Cm7** **F7**

Bbmaj7 **Gm7** **Cm7** **F7** **Bbmaj7** **Eø7** **A7(b9)**

Dm⁷ **Bb7(b9)**

Eø7 **A7(b9)** **Dm** (**Eø7** **A7(b9)**)

CENTRAL PARK WEST

(BALLAD)

C#m7 F#7 Bmaj7 Em7 A7 Dmaj7 Bbm7 Eb7

Abmaj7 Gm7 C7 Fmaj7 C#m7 F#7

Bmaj7 Em7 A7 Dmaj7 C#m7 F#7

Bmaj7 C#m7/B

Bmaj7 C#m7/B C#m7 F#7

ENDING

Bmaj7

CHEGA DE SAUDADE

MEDIUM BOSSA

A

1 Dm^7 Dm^7/C E^7/B E^7

5 $E\emptyset^7$ $A^7(b9)$ Dm^7 $E\emptyset^7$ $A^7(b9)$

9 Dm^7 $B\emptyset^7$ $E^7(b9)$ Am^7

13 $Bbmaj7$ $E\emptyset^7$ $A^7(b9)$

B

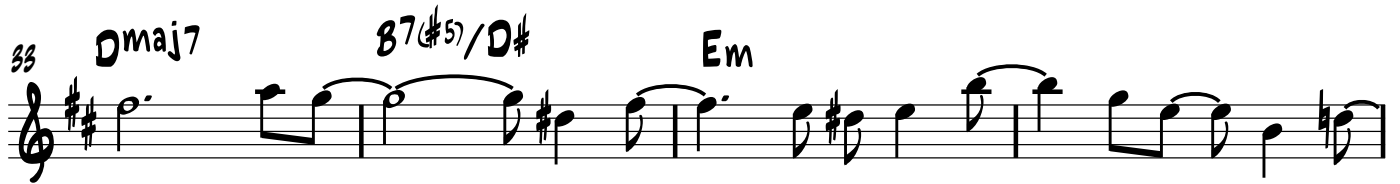
17 Dm^7 Dm^7/C E^7/B E^7

21 $E\emptyset^7$ $A^7(b9)$ Dm^7 $D^7(b9)$

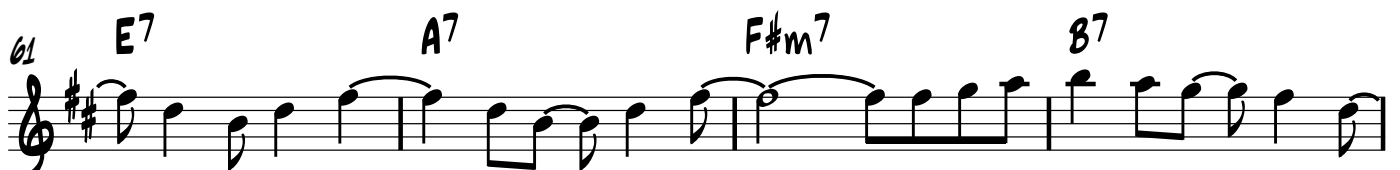
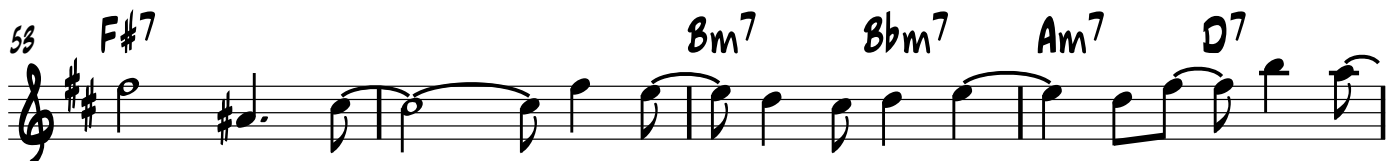
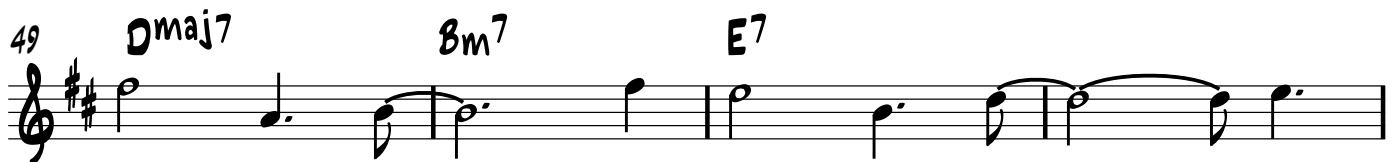
25 Gm^7 $A^7(b9)$ Dm^7 Dm^7/C

29 $B\emptyset^7$ Bbm^6 Dm^7 A^7

C



D



CRAZY RHYTHM

A

Fmaj7

G7



5

Gm7

C7

Fmaj7

Gm7

C7



A

9

Fmaj7

G7



13

Gm7

C7

Fmaj7



B

17

Cm7

F7

Bbmaj7



21

Bbm7

Eb7

Am7

D7

Gm7

C7



A

25

Fmaj7

G7



29

Gm7

C7

Fmaj7

Gm7

C7



FLIGHT TO JORDAN

LATIN JAZZ
2-3 SON CLAVE

OPEN PERCUSSION SOLO

LAST X 0

Musical staff for the Open Percussion Solo, showing a series of rhythmic slashes in a 4/4 time signature.

5 **S**

Musical staff for the Sample Bass Line, showing a melodic line in the treble clef and a bass line in the bass clef. Chords are indicated below the staff.

Chords: Cm^{6/9}, Eb^{6/9}, D7(^{#9}/_{#5}) G7(^{#5})

SAMPLE BASS LINE

9 Cm^{6/9} Eb^{6/9} D7(^{#9}/_{#5}) G7(^{#5})

Musical staff for the Sample Bass Line, continuing the melodic and bass lines.

13 Cm^{6/9} Eb^{6/9} Abmaj7 G7(^{#9}/_{#5}) G¹³

Musical staff for the Sample Bass Line, continuing the melodic and bass lines.

17 Cm^{6/9} Eb^{6/9} 1. Ab^{6/9} G7(^{#5})

Musical staff for the Sample Bass Line, continuing the melodic and bass lines. A first ending bracket is shown above the staff.

(DRUM FILL)

21 2. D7(b9) G7(^{#5}) Cm **⊕**

Musical staff for the Sample Bass Line, ending with a double bar line and a circled cross symbol.

(BREAK!)

PLAY MELODY TWICE, AND SOLO OVER
32 MEASURE FORM (WITH 1ST AND 2ND ENDING)
AFTER SOLOS, DS AL CODA (W. REPEATS)



23

SLOWER (M = 138)

(BREAK!)

Cm⁷ Bbm⁷ Abmaj⁹ Gm⁷ Fm⁷ Ebmaj⁷

RIT

27

Dbmaj⁷ Cm⁹

FREEDOM JAZZ DANCE

FUNK ROCK

8b7

8b7

8b7

8b7

(1st x 0)

SAMPLE GROOVE RHYTHM THROUGHOUT

8b7

FULL HOUSE

INTRO

INTRO

Fm^9

Fm^9

1. 2.

A

A

Fm^9 Bb^{13} Fm^9 Bb^{13}

Fm^9 Bb^{13} Fm^9 [Db^7 ON SOLOS] $C7(\#9)$

Fm^9 Bb^{13} Fm^9 Bb^{13}

Fm^9 Bb^{13} Fm^9

1. 2.

B

B

Bbm^7 Eb^7 Ab^{maj7} Db^7

$Gbmaj7$ $Bmaj7$ $G\emptyset^7$ $C7(\#11/9)$

A Fm^9 Bb^{13} Fm^9 Bb^{13}

Fm^9 Bb^{13} Fm^9 [Db^7 ON SOLOS] $C7(\#9)$

Fm^9 Bb^{13} Fm^9 Bb^{13}

Fm^9 Bb^{13} Fm^9 \oplus

SOLOS ON AABA
AFTER SOLOS, DS AL CODA

\oplus Fm^9

Fm^9 1.

2. Fm^9

ISOTOPE

(Medium Swing)

"2 feel"

Chord changes: C7, Eb7, D7, G7, C7, F7, Bb7, C7, A9(SUS4), Ab9(SUS4), Dm7, G7, C7, A7, Gb7, Eb7

Melody twice in & out.
Solo over changes below.

SOLOS!

Chord changes: C7, C7, C7, C7; F7, Bb7, C7, A7; Ab7, G7, C7, A7, Gb7, Eb7

NIGHT AND DAY

A

Abmaj7 G7 Cmaj7

Abmaj7 G7 Cmaj7

F#o7 Fm7 Em7 Eb07

Dm7 G7 Cmaj7 1. 2. Bb7

B

Ebmaj7 Cmaj7

Ebmaj7 Cmaj7

F#o7 Fm7 Em7 Eb07

Dm7 G7 Cmaj7

ON BROADWAY

8TH NOTE ROCK FEEL

Ab Gb Ab Gb Ab Gb Ab Gb

A

5 Ab Gb Ab Gb Ab Gb Ab Gb

9 Ab Gb Ab Gb Ab Gb Ab Gb

13 Db Cb Db Cb Db Cb Db D Eb

17 Ab Gb Ab Gb Ab Gb Ab Gb

B

21 A G A G A G A G

25 A G A G A G A G

29 **D C D C D C D D# E**

33 **A G A G A G A G**

37 **C Bb Ab Bb Ab Bb Ab Bb Ab**

41 **Bb Ab Bb Ab Bb Ab Bb Ab**

45 **Eb Db Eb Db Eb Db Eb E F**

49 **Bb Ab Bb Ab Bb Ab Bb Ab**

SOLOS - OPEN VAMP

53 **Bb Ab Bb Ab Bb Ab Bb Ab**

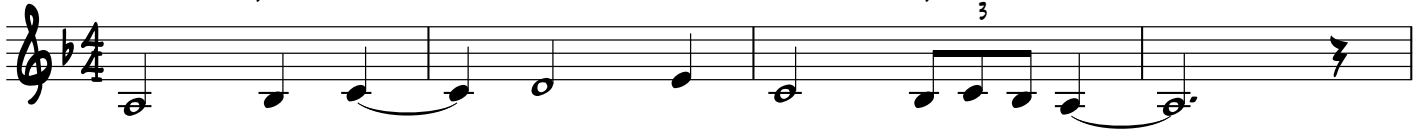
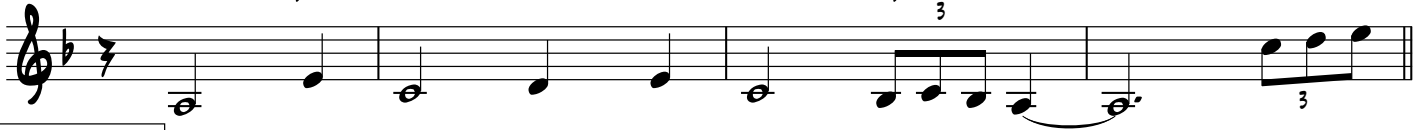
OPTIONAL BACKGROUND LINE

57 **Bb Ab Bb Ab Bb Ab Bb Ab**

PARISIAN THOROUGHFARE

FAST SWING

INTRO

Fmaj7 Gm7 Am7 Bbmaj7 Cmaj7 Am7 Gm7₃ Fmaj7Fmaj7 Gm7 Am7 Bbmaj7 Cmaj7 Am7 Gm7₃ Fmaj7

A - MELODY

Fmaj7

Gm7 Am7

Bbmaj7

Am7

D7 Gm7



C7

Fmaj7

Gm7 Am7

Bbmaj7



F/C

Gm7

C7(b9)

A

Fmaj7

Gm7 Am7

Bbmaj7



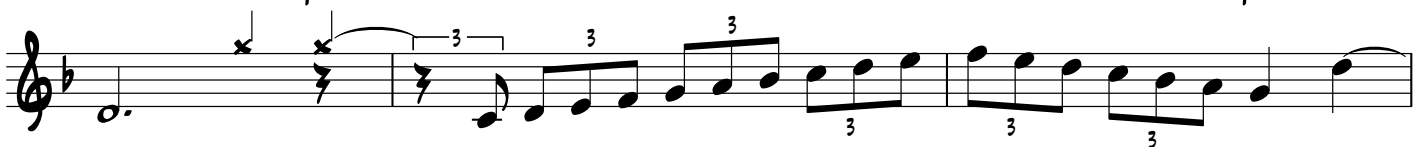
Am7

D7 Gm7

C7

Fmaj7

Gm7 Am7

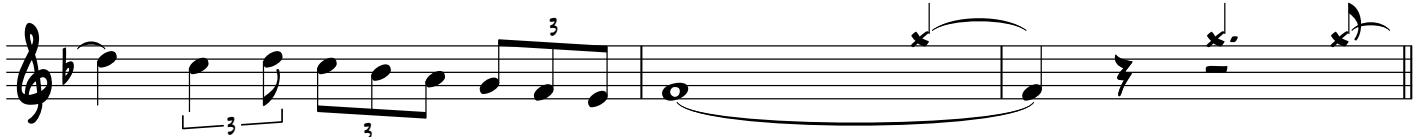


Bbmaj7

Fmaj7

Bø7

E7(#5)



B Amaj9 Bm7 E7 Amaj9 Bb9 D7(b9)

Gmaj7 Dm7 G7 Gm7 C7(b9)

A Fmaj7 Gm7 Am7 Bbmaj7 Am7 D7 Gm7 C7

Fmaj7 Gm7 Am7 Bbmaj7 F/C Gm7 C7(b9)

FINE

SOLOS:

A F Dm7 Gm7 C7 F D7 Gm7 C7

F F7 Bb Bø7 F Gm7 C7

A F Dm7 Gm7 C7 F D7 Gm7 C7

F F7 Bb Bø7 F Bø7 E7

B Amaj9 Bm7 E7 Amaj9 Dm7 G7

A F Dm7 Gm7 C7 F D7 Gm7 C7

F F7 Bb B°7 F Gm7 C7

D.S AL FINE

Song For My Father

A Fm^7 Fm^7 Eb^7 Eb^7

6 Db^7 $C^7(SUS4)$ Fm^7 Fm^7

(break)

A Fm^7 Fm^7 Eb^7 Eb^7

10

14 Db^7 $C^7(SUS4)$ Fm^7 Fm^7

(break)

B Eb^7 Eb^7 Fm^7 Fm^7

18

22 Eb^7 Db^7 $C^7(SUS4)$ Fm^7 Fm^7

(break)

SPEAK NO EVIL

MEDIUM SWING

A Cm^7 Dbmaj^7 Cm^7 Dbmaj^7

6 Cm^7 Dbmaj^7 Cm^7 Dbmaj^7 $\text{Eb}^{\flat 7}$

10 Em^7 Cm^7 Dm^7 Bbm^7 $\text{A}^7(\flat 5)$


13 Bbm^7 $\text{A}^7(\flat 5)$ 1. Bbm^7 2. Bbm^7

B $\text{A}^{\circ 7}$ Ab^7 Gm^7 $\text{Gb}^7(\flat 5)$

Fm^7 $\text{Bb}^7(\flat 5)$ D/Eb Dbmaj^7 C

A Cm^7 Dbmaj^7 Cm^7 Dbmaj^7

Cm7 Dbmaj7 Cm7 Dbmaj7 Ebm7



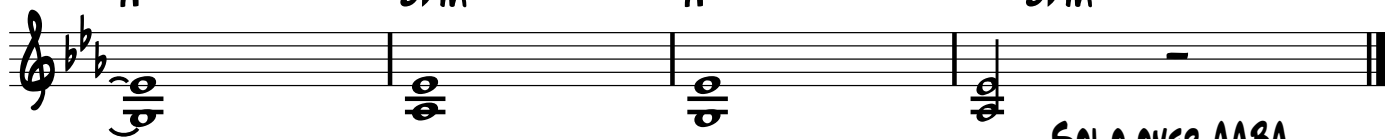
A musical staff in treble clef with a key signature of two flats (Bb, Eb). It contains five measures of music. The first four measures each contain a single half note, with chords Cm7, Dbmaj7, Cm7, and Dbmaj7 written above them. The fifth measure contains a half note followed by a quarter rest, with the chord Ebm7 written above. The staff ends with a double bar line.

Em7 Cm7 Dm7 Bbm7



A musical staff in treble clef with a key signature of two flats (Bb, Eb). It contains four measures of music. The first measure has a half note with chord Em7. The second measure has a quarter note, a quarter rest, and a quarter note with chord Cm7. The third measure has a quarter note, a quarter rest, and a quarter note with chord Dm7. The fourth measure has a quarter note, a quarter rest, and a quarter note with chord Bbm7. The staff ends with a double bar line.


A7(b5) Bbm7 A7(b5) Bbm7



A musical staff in treble clef with a key signature of two flats (Bb, Eb). It contains four measures of music. Each measure contains a whole note chord: A7(b5), Bbm7, A7(b5), and Bbm7. The staff ends with a double bar line.

SOLO OVER AABA
AFTER SOLO, DS AL CODA

Cm7 Dbmaj7 Cm7 Dbmaj7



A musical staff in treble clef with a key signature of two flats (Bb, Eb). It starts with a double bar line with repeat dots. It contains four measures of music. The first four measures each contain a single half note, with chords Cm7, Dbmaj7, Cm7, and Dbmaj7 written above them. The staff ends with a double bar line.

REPEAT AND FADE

THE BLUES WALK

Bb7

Eb7 **Bb7**

Cm7 **F7** **Bb7** **G7** **Cm7** **F7**

(1st x o)

Blues Scale

1 b3 4 #4 5 b7 8

Bb7 **Eb7** **Bb7** **Bb7**

Eb7 **Eb7** **Bb7** **G7**

Cm7 **F7** **Bb7** **G7** **Cm7** **F7**

THE NEARNESS OF YOU

A

Fmaj7 Cm7 F7 Bbmaj7 Bb^o7

Am7 D7 Gm7 C7 Am7 D7 Gm7 C7

A

Fmaj7 Cm7 F7 Bbmaj7 Bb^o7

Am7 D7 Gm7 C7 Fmaj7 Eb7 Fmaj7

B

Gm7 C7 Fmaj7 Cm7 F7

Bbmaj7 A^o7 D7(b9) Gm7 C7

A

Fmaj7 Cm7 F7 Bbmaj7 Bb^o7

Am7 D7 Gm7 C7 A^o7 D7(b9)

Gm7 C7 Fmaj7 (D7 Gm7 C7)

YESTERDAYS

A

Dm⁷ E^{ø7} A7(b⁹) Dm⁷ E^{ø7} A7(b⁹)

Dm⁷ Dm/C# Dm⁷/C B^{ø7} E7(b⁹)

B

A7(#5) D⁹ G¹³ C⁹

Cm⁷ F7 B^bmaj7 E^{ø7} A7(b⁹)

A

Dm⁷ E^{ø7} A7(b⁹) Dm⁷ E^{ø7} A7(b⁹)

Dm⁷ Dm/C# Dm⁷/C B^{ø7} E7(b⁹)

B

A7(#5) D⁹ G¹³ C⁹

Cm⁷ F7 B^bmaj7 E^{ø7} A7(b⁹)